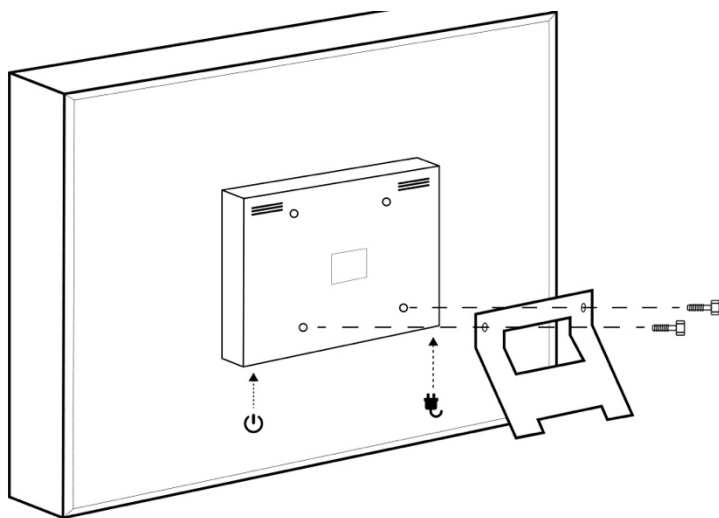
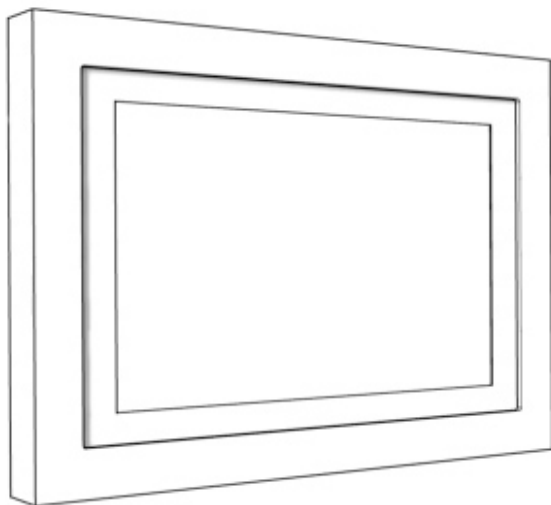




**MANUAL - F2W10**





## **Instrucciones de Uso / Operating instructions**

Antes de utilizar este producto, por favor, lea detenidamente este manual y consérvelo para futuras referencias.

Before operating this unit, please read this manual thoroughly and retain it for future reference.

### **Registro de propietario /Owner's Record**

El modelo y número de producto se encuentran en el menú configuración. Anótelos en el espacio a continuación. Utilice este número cuando necesite asistencia con el producto.

The model and serial numbers are located in the settings menu. Record the serial number in the space provided below. Refer to this numbers whenever you call for assistance regarding this product.

Model No. \_\_OKO/F2W10\_\_

Serial No. \_\_\_\_\_



## **WARNING**

Do not expose the unit to rain or moisture.

## **CAUTION**

Any changes or modifications that aren't contemplated in this manual can void your authority to operate this equipment.

If you have any questions regarding this product, contact us at:

[www.okosmartframe.com](http://www.okosmartframe.com)

## **Note**

This product has been tested and complies with the EMC Directive for using connection cables and electronic devices.

The manufacturer provides reasonable protection against harmful interference in a residential installation. This equipment generates and uses radio frequency energy and, if not installed in accordance to the instructions, may interfere with radio communications. However, there is no guarantee that interference will not occur in a particular installation. If this equipment does interfere with radio or television reception, which can be determined by turning the equipment off and on, the user is encouraged to try to correct the interference by one or more of the following measures:

- Reorient or relocate the device increasing separation between the equipment and the receiver.

- Connect the equipment to a different outlet.
- Consult the dealer or an experienced radio/TV technician for help.

## Notice for users

EN

Software © 2016 Tecnologías Avanzadas para el Ocio S.L. (TAOC)

Documentation © 2016 Tecnologías Avanzadas para el Ocio S.L.

All rights reserved. This manual or the software described herein, wholly or partially, may not be reproduced, translated or reduced to any machine readable form without prior written approval from TAOC.

IN NO EVENT SHALL TAOC BE LIABLE FOR ANY INCIDENTAL, CONSEQUENTIAL OR SPECIAL DAMAGES, WHETHER BASED ON TORT, CONTACT, OR OTHERWISE, ARISING OUT OF OR IN CONNECTION WITH THIS MANUAL, THE SOFTWARE OR OTHER INFORMATION CONTAINED HEREIN OR THE USE THEREOF.

TAOC reserves the right to make any modification to this manual or the information contained herein at any time without notice. The software described herein may also be governed by the terms of a separate user license agreement.

Any design data such as sample pictures provided in this software cannot be modified or duplicated except for the purpose of personal use. Any unauthorized duplication of this software is prohibited under copyright law. Please note that unauthorized duplication or modification of portraits or copyrighted work could infringe the rights reserved by rights holders.

Notice that OKO™ is capable of updating its software even without the user's interaction, which may substantially change its features and

functions. You can keep up to date with the new capabilities and functions of your OKO™ at:

[www.okosmartframe.com](http://www.okosmartframe.com)

## **On the illustrations and screen shots used in this manual**

The illustrations and screenshots used in this manual are of the OKO/F1W10 unless noted otherwise. Please note that this product provides online software updates that can substantially change the features of your OKO™.

## **About OKO™App**

To enjoy the best experience with your OKO™ we suggest you download the mobile application OKO™App. Available on your usual App provider.

Although OKO can work by itself, not all features will be available without linking it to the mobile application. This manual will cover the main aspects of OKO™App. Notice that as with OKO™, OKO™App is capable of updating its software even without the user's interaction, which may substantially change its features and functions. You can keep up to date with the new capabilities and functions of your OKO™ and OKO™App at:

[www.okosmartframe.com](http://www.okosmartframe.com)





# **Table of Contents**

## **Introduction and thanks**

## **Care and maintenance**

## **Main features**

## **Product contents**

## **Usage**

Powering

Touch gestures

First Run and Wizard

Main Screen

Menu

## **Library**

## **Channels**

## **OKO™ Settings**

## **System Update**

System Update

## **Additional information**

Precautions

AC adapter

Moisture condensation

Transport

EN

## Introduction and thanks

TAOC wants to thank you for the purchase of your new OKO™

We hope you enjoy our product.

This device belongs to a new generation of gadgets on decoration and entertainment based. It lets you receive and display multimedia content sent from our App such as images, audios, videos and event alerts, it can also display content from our channels and receive future updates.

With an intuitive user interface, in few seconds you'll have your OKO™ set up and ready to be enjoyed.

Please read this manual thoroughly and keep it for future reference.

Notice that OKO™ is capable of updating its software, which may substantially change its features and functions. You can keep up to date with the new capabilities and functions of your OKO™ at:

[www.okosmartframe.com](http://www.okosmartframe.com)

## Care and maintenance

Do not expose your OKO™ to dust, direct sunlight or high temperatures.

Do not use corrosive products or abrasive cleaners.

Keep the device clean and dust-free with a soft, dry cloth.

If you hang the device, make sure it's well anchored.

Do not disassemble the device. Any repairs must be done exclusively by qualified TAOC personnel.

Any misuse including, but not limited to the above, may void the warranty.

## Main features

OKO™ SmartFrame 30,5 x 21,5 x 2 cm

AC Adapter: "Prim- AC: 110-240 V; 50/60 Hz; 0,2 A // Sec- DC 5 V -2.0 A"

Screen: Capacitive, 10 points, 10 inches touch screen

Connectivity: WiFi (802.11b/g/n).

## **Product contents**

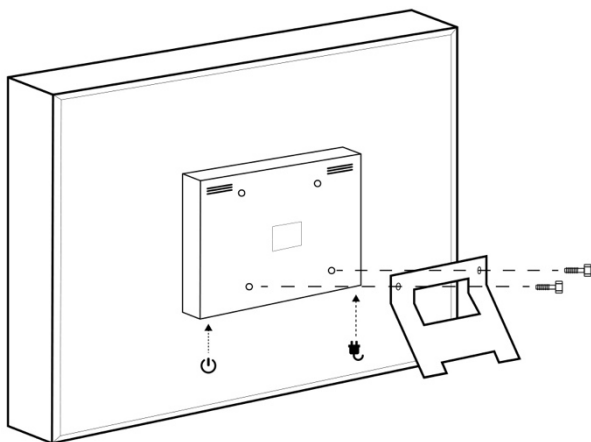
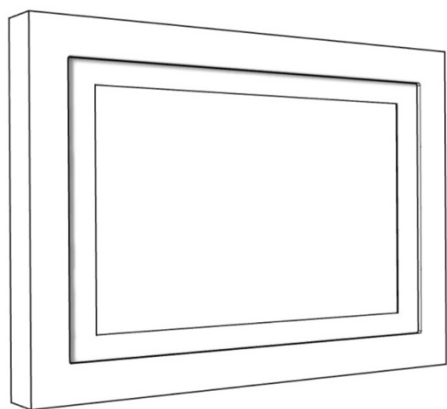
User's manual

AC Adapter

Cleaning blanket

Screws and Allen wrench

Metallic foot



## Usage

### **Powering**

Plug your OKO™ to power by using the charger included.

To turn on your OKO™, press the power switch located on the side of the device for a few seconds. To turn off the device hold down the power switch until the shutdown menu appears on the screen, then choose the "Shut Down" option. A short press of the power switch will lock/unlock the device by turning off or on the screen and activating energy saving mode.

Notice that OKO™ is capable of updating its software, which may substantially change its features and functions. You can keep up to date with the new capabilities and functions of your OKO™ at:

[\*\*www.okosmartframe.com\*\*](http://www.okosmartframe.com)

## Touch Gestures

The screen on your OKO™ has multi-touch capabilities, this are the touch gestures that can be used to interact with your OKO™:



Single Tap: A quick tap on the screen.

Double Tap: Two quick taps on the screen.



Swipe: Drag your finger on any direction maintaining contact with the screen.

Long Press: Press the screen with a single finger for 2 seconds.



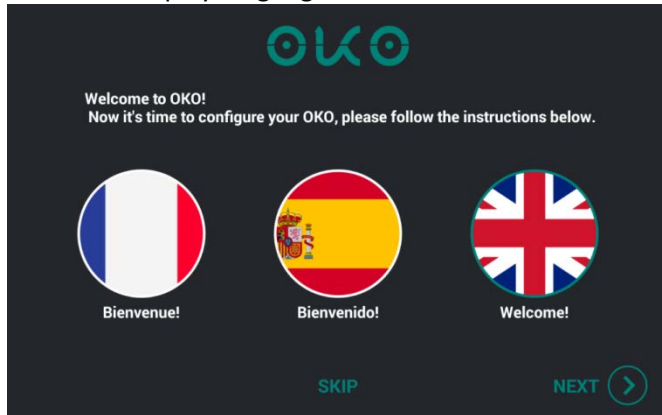
Pinch: This will zoom in or out the content when available.



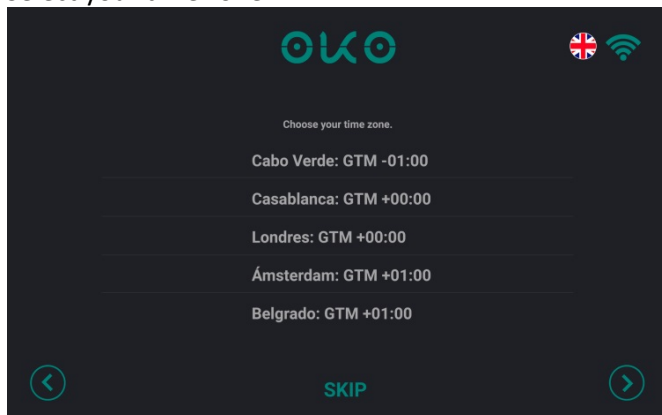
## First run and Wizard

Setting up your OKO™ is very simple. Just follow the instructions:

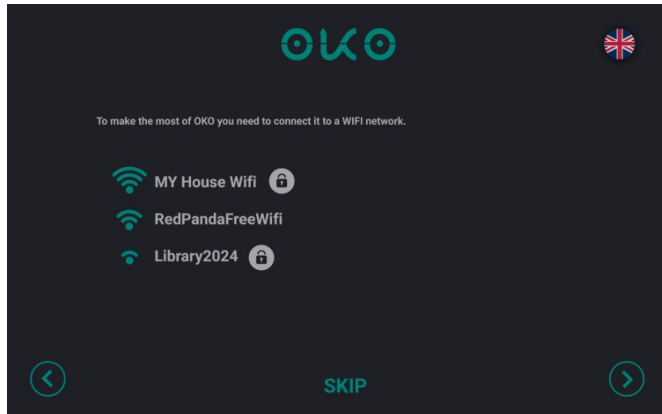
1. Select the display language.



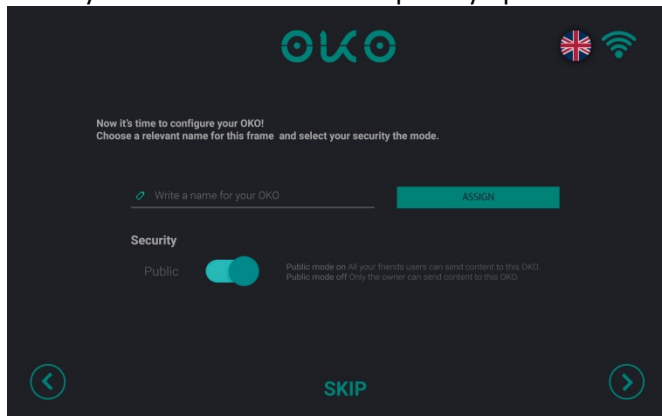
2. Select your time zone.



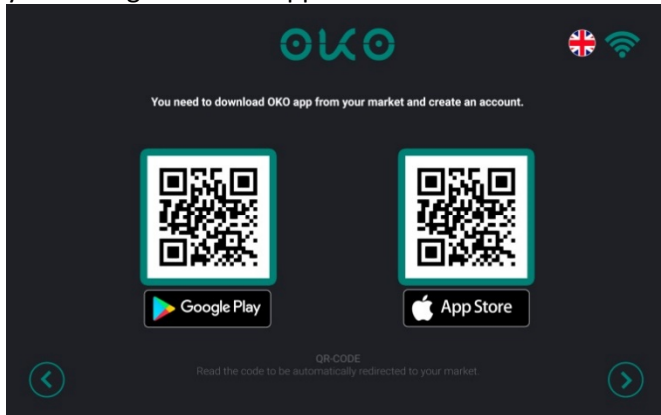
3. Connect OKO to a WIFI network.



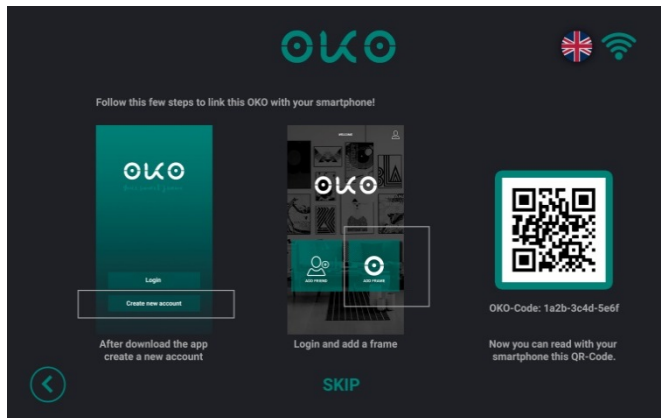
4. Name your OKO and choose the privacy options.



5. Download OKO™ App, available for both Apple (iOS) and Android devices. This can be done by scanning the QR code displayed on the screen that will direct you to the App Market on your phone or by manually searching for OKO™ App.



6. Linking your OKO™ Smartframe to your OKO™ App. You can **SKIP** this step, but we strongly recommend linking the device to the app, since otherwise most of OKO's features won't be available.



6.1. Open OKO™ App on your phone and follow the instructions to register a new account. If you already have an account, proceed to login.

---

### Problems signing in to your account in your smartphone.

If you can't sign in because you have forgotten your password, click on the “forgotten password” item on the login screen in your OKO™ App. From there, fill your username and follow the instructions on the screen. **Remember that your username is your email address.**

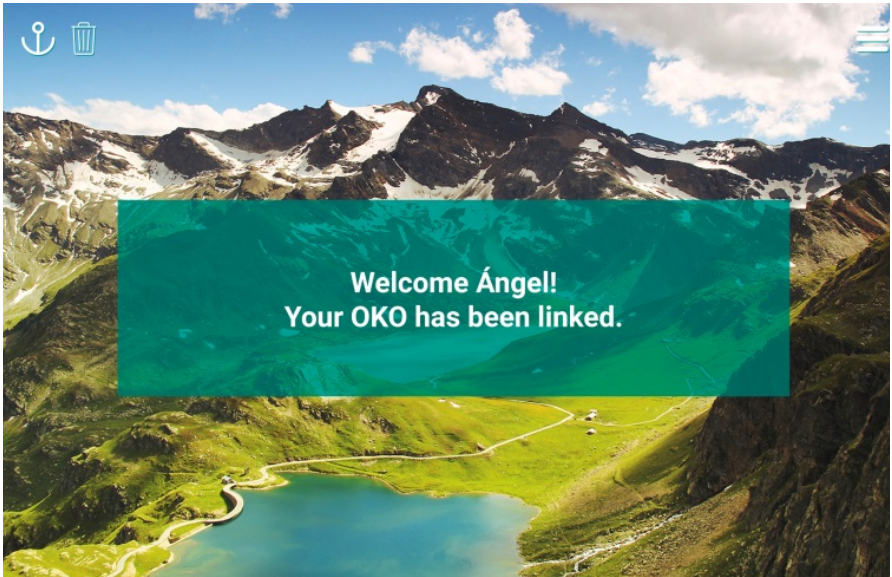
EN

6.2. OKO™ App will now let you choose between adding OKO™ to your account or adding a friend. We'll start by linking your newly acquired OKO™ to your account.

6.3. Linking your OKO™ is very easy, just scan the QR code that you can see in the OKO's screen with OKO™ App or insert the OKO-Code manually.



Your OKO™ is now ready to run and you can send content from your app.



To know more about uses of the OKO app, please visit:

**[www.okosmartframe.com](http://www.okosmartframe.com)**

where you will find up to date information.



## **Main screen**

The main screen displays your content.



The buttons on the top of the screen allow you to control the content. If these buttons are not displayed, you can bring them up by tapping once the screen.



ANCHOR: Fixes the content on the screen, this will prevent the auto play to go to the next content.



BIN: Deletes the current shown content.



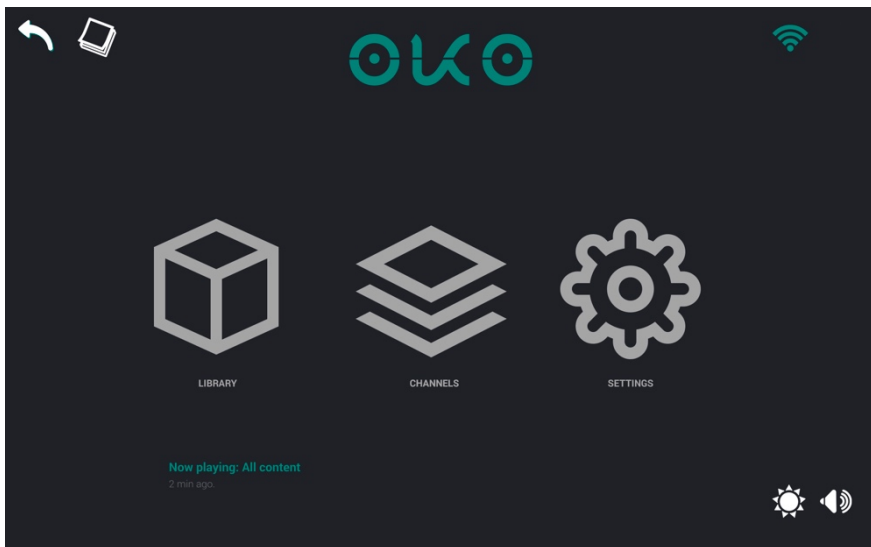
MENU: Opens the menu.



When new content is received, an exclamation mark (!) with a number will appear on the left of the menu icon, displaying the amount of new content received.



# Menu





BACK: Go back to main view.



NOTES: Review your notes.



WIFI: Connectivity options.



LIBRARY: Manage your content.



CHANNELS: Browse a set of predefined contents.



SETTINGS: Configure your OKO™



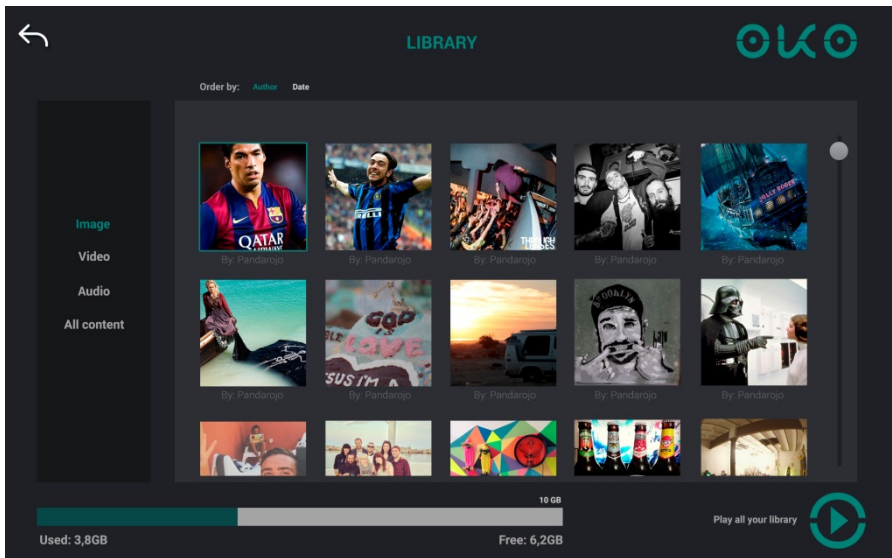
BRIGHTNESS: Adjust brightness level.



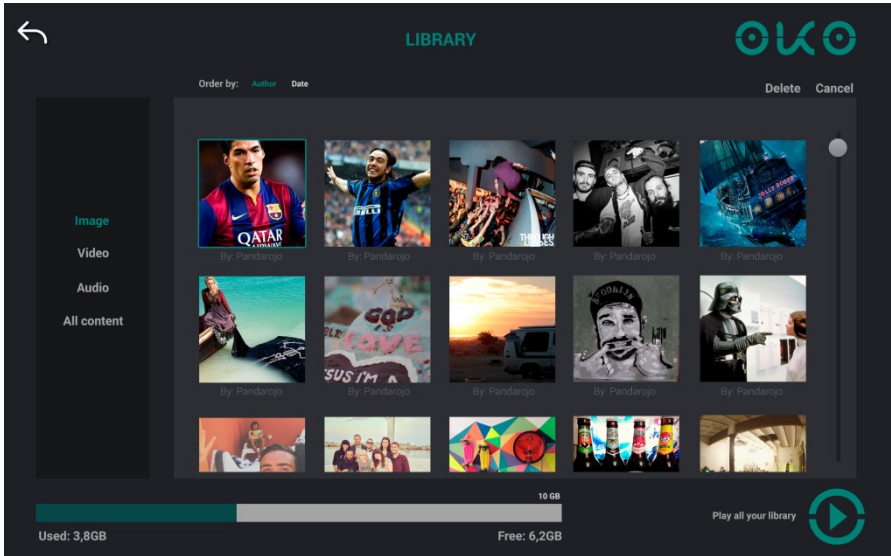
VOLUME: Adjust sound volume.

# Library

Whenever your OKO™ receives content from your OKO™ App, or from a friend, it will be added to your playlist queue. At any time, you can review your playlist on the library menu.



In the library menu, you can manage your playlist. When finished, click play to show the content.

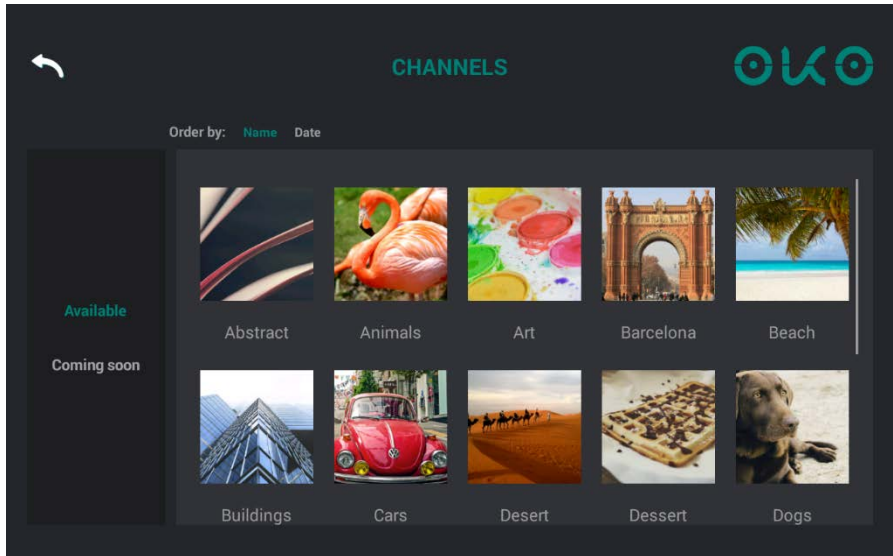


EN

Long pressing a picture will show the delete option on the top right corner of the screen. Tap it to delete the picture.

# Channels

OKO™ provides a set of predefined content that you can play straight away. Just select your preferred theme in the channel menu and click play!

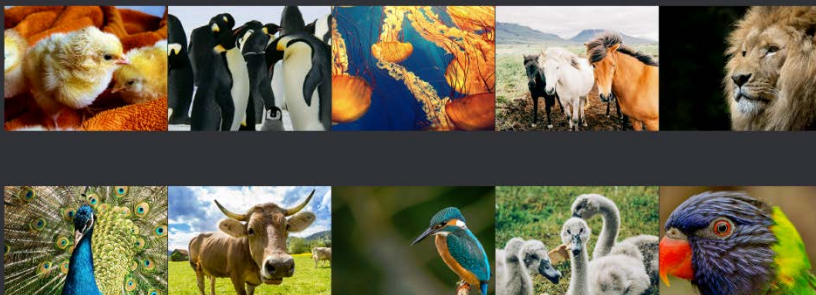




## Animals



EN



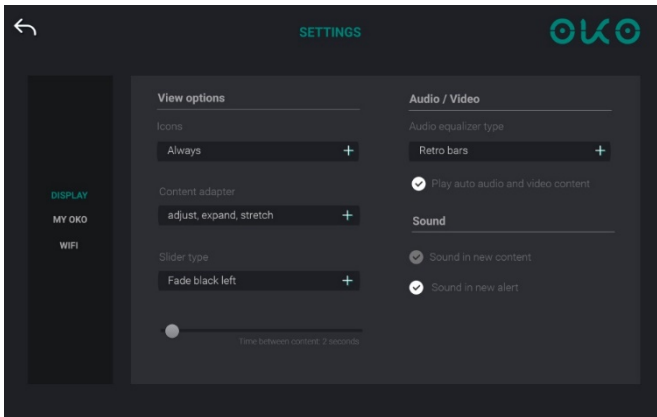
Play all content of the channel



# Settings

## Display Settings

This menu allows managing the behaviour of your OKO™ when displaying content. Such as comments visibility, time between contents, etc.



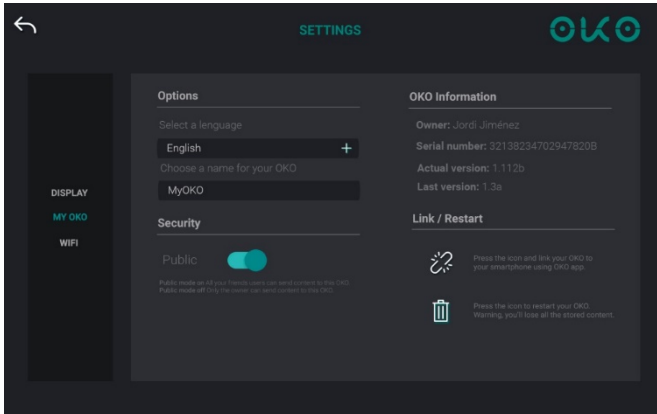
## My Oko

Configure and link your OKO™ to your OKO™ App.

Here you will find OKO's serial number.

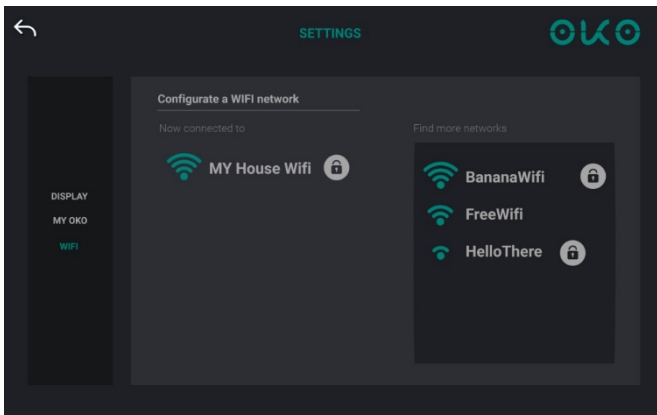
When unlinking your OKO™, you will delete the link between your Smartphone and your OKO™, but you will preserve all the content stored in the cloud, being able to recover it once you link your OKO™ to a smartphone again.

Delete all content will set OKO™ to its initial configuration, and you will lose all content stored in the cloud.



## WiFi

Configure your wireless connectivity.





## Updates

OKO™ integrates a version control system which will install high priority updates regardless of user interaction. An update may substantially change its features and functions. You can keep up to date with the new capabilities and functions of your OKO™ at:

[www.okosmartframe.com](http://www.okosmartframe.com)

On this regard, this manual should not be considered final, but a reference manual of your OKO™ functionalities.

## Additional information

### Precautions

- Be careful not to set or drop any heavy objects on the power cord, or to damage the power cord in any way. Never operate this OKO™ with a damaged power cord.
- Should any solid object or liquid fall into the cabinet, unplug OKO™ and have it checked by qualified personnel before operating it any further.
- To disconnect the power cord, pull it out by the plug. Never pull the power cord itself.
- When OKO™ is not going to be used for an extended period of time, disconnect the power cord from the wall outlet.
- Do not handle OKO™ roughly.

- To reduce the risk of electrical shock, always unplug OKO™ from the electrical outlet before cleaning and servicing.
- Avoid placing OKO™ in a location subject to:
  - vibration
  - humidity
  - excessive dust
  - direct sunlight
  - extremely high or low temperatures
- Do not use electrical equipment near the photo frame. OKO™ will not work properly in electromagnetic fields.
- Do not place heavy objects on the OKO™.

## **AC adapter**

- Even if your OKO™ is turned off, AC power (regular current) is still supplied to it while it is connected to the wall outlet via the AC adaptor.
- Be sure to use the AC adaptor supplied with OKO™. Do not use other AC adaptors, as this may cause a malfunction.
- Do not use the supplied AC adaptor for other devices.
- Do not use an electrical transformer (travel converter), as this may cause overheating or a malfunction.
- In case the cord of the AC adaptor is damaged, do not use it any longer, as this may be dangerous.

## **Moisture condensation**

- If the photo frame is brought directly from a cold location to a warm location or placed in an extremely warm or humid room, moisture may condense inside the unit. In such cases OKO™ will probably not work properly and may even develop a fault if you persist in using it. If moisture occurs, unplug the AC adaptor of the photo frame and do not use the photo frame for at least one hour.

## **Transport**

- When you transport OKO™, remove the memory card, external devices, AC adaptor, and connected cables from OKO™ and put the photo frame and its peripherals in the original box with the protective packaging. If you no longer have the original box and packing parts, use similar packing material so that OKO™ will not be damaged while being transported.
- Clean OKO™ with a soft dry cloth, or a soft cloth lightly moistened with a mild detergent solution. Do not use any type of solvent, such as alcohol or benzene, which may damage the screen.

## **Environmental protection**

Waste electrical products should not be disposed of with household waste. Please recycle where facilities exist. Check with your Local Authority or retailer for recycling advice.



# Declaration of Conformity



Manufacturer name: Tecnologías Avanzadas para el Ocio S.L.

Address: TECNOLOGIAS AVANZADAS PARA EL OCIO, S.L. C/Gran Capitán, s/n - Edificio C1, BARCELONA, 08034, SPAIN

NIF B65748303

We declare, under our own exclusive responsibility, that the product:

**OKO SMARTFRAME OKO/F1W10**

Manufacturing country: China

Is in compliance with the essential norms and standards of the Directive 1999/5/EC of the European Parliament and of the Council of March 09th 1999.



## Federal Communications Commission (FCC) Statement

This device complies with part 15 of the FCC Rules. Operation is subject to the following two conditions: (1) This device may not cause harmful interference, and (2) this device must accept any interference received, including interference that may cause undesired operation.

Note: This equipment has been tested and found to comply with the limits for a Class B digital device, pursuant to part 15 of the FCC Rules. These limits are designed to provide reasonable protection against harmful interference in a residential installation. This equipment generates, uses and can radiate radio frequency energy and, if not installed and used in accordance with the instructions, may cause harmful interference to radio communications. However, there is no guarantee that interference will not occur in a particular installation. If this equipment does cause harmful interference to radio or television reception, which can be determined by turning the equipment off and on, the user is encouraged to try to correct the interference by one or more of the following measures:

- Reorient or relocate the receiving antenna.
- Increase the separation between the equipment and receiver.
- Connect the equipment into an outlet on a circuit different from that to which the receiver is connected.
- Consult the dealer or an experienced radio/TV technician for help.

Warning: Changes or modifications made to this device not expressly approved by TAOCC may void the FCC authorization to operate this device.

Note: The manufacturer is not responsible for any radio or tv interference caused by unauthorized modifications to this equipment. Such modifications could void the user's authority to operate the equipment.

RF exposure statement: The transmitter must not be allocated or operated in conjunction with any other antenna or transmitter. This equipment complies with the FCC RF radiation exposure limits set forth for an uncontrolled environment. This equipment should be

installed and operated with a minimum distance of 20cm between the radiator and any part of your body.

## **SAR Statement**

This Tablet meets the government's requirements for exposure to radio waves. The guidelines are based on standards that were developed by independent scientific organizations through periodic and thorough evaluation of scientific studies. The standards include a substantial safety margin designed to assure the safety of all persons regardless of age or health. FCC RF Exposure Information and Statement

The SAR limit of USA (FCC) is 1.6 W/kg averaged over one gram of tissue. Device types: KPAU02 (FCC ID: 2AHS8-KPAU02) has also been tested against this SAR limit. SAR information on this and other pad can be viewed on-line at <http://www.fcc.gov/oet/ea/fccid/>. Please use the device FCC ID number for search. This device was tested for typical operations with handset Tablet 0mm from the body. The use of belt clips, holsters and similar accessories should not contain metallic components in its assembly. The use of accessories that do not satisfy these requirements may not comply with FCC RF exposure requirements, and should be avoided



## USER DATA

Name:

Address:

City:

CP:

Province:

Model:

Serial Nº:

Purchase date:

Billing Nº:

Stamp:

## SELLER DATA

Name:

Address:

City:

CP:

Province:

IMPORTANT

Should you need assistance, before addressing to you seller, please contact us on our website or our Customer Service.



EN

## EUROPEAN WARRANTY CARD

THIS WARRANTY CARD IS PERSONAL AND INTRANSFERIBLE AND ONLY VALID FOR THE ORIGINAL BUYER. FILL THE REQUESTED DATA AND KEEP IT SAFE WITH YOUR BUYING BILL.

Tecnologías Avanzadas para el Ocio S.L. AGREES TO FULFILL THE COVERAGE CONDITIONS OF THIS WARRANTY.

**[www.okosmartframe.com](http://www.okosmartframe.com)**

**Tecnologías Avanzadas para el Ocio S.L.**

TECNOLOGIAS AVANZADAS PARA EL OCIO, S.L. C/Gran Capitán, s/n - Edificio C1, BARCELONA,  
BARCELONA, 08034, España

## EUROPEAN WARRANTY

This Guarantee shall be valid in all Member States of the European Union, without prejudice to any limitations that may be legally applicable in the country in which it is intended to be exercised.

To claim the rights and coverages that assist you as a European consumer under this Guarantee, the user will have the means to communicate with our Customer Service numbers, via our website, or in writing, by contacting our Customer Service.

## VALIDITY OF THE WARRANTY

This warranty only covers official products imported or marketed by TAOC. To benefit from it you must:

Complete the warranty card, model and serial number.

It is imperative to attach, along with this Guarantee Card, duly stamped by the establishment, the original of the ticket or invoice of purchase that identifies the model.

The benefits of the guarantee will only be valid if the Technical Services authorized by TAOC are used.

The product must be used in accordance with the instructions in the manual.

The period of validity of this guarantee will be of 2 years.

## COVERAGE

The holder of this guarantee will enjoy the rights and coverages that are applicable in the Member States of the European Union under the current legislation without prejudice to the rights, guarantees and limitations that, if applicable, are legally applicable in the country in which it is intended to exercise.

In order to claim the rights and coverage contained in this document, the user can communicate with our Customer Service number, in writing, addressed to TAOC and via ordinary jurisdiction. During the duration of the repair, no damages will be paid for the time the product is out of service. TAOC will not be liable for damages that a product may cause to external elements. The exchange units and spare parts may be new or refurbished.

## PROTECTION OF PERSONAL DATA

In accordance with Organic Law 15/1999, we inform you that the personal data requested, all of them obligatory for the provision of the Warranty Service, may be incorporated into a file / s duly registered in the RGD, which TAOC is responsible for, with the purpose of providing the service, as well as to keep you informed of similar products or services. The holder may exercise his rights of access, rectification, cancellation and opposition by directing a signed document, addressed to the attention of TAOC, accompanied by a photocopy of his ID to the address TECNOLOGÍAS AVANZADAS PARA EL OCIO, S.L. C / Gran Capitán, s / n - Building C1, BARCELONA, 08034, Spain or to the e-mail address: [admin@taoc.es](mailto:admin@taoc.es)

## WARRANTY EXCLUSIONS

- Failure to comply with any of the above requirements.
- When the product has not been used exclusively as directed in the manual.
- Any component or accessory inside or outside the appliance, which is not specified and included in this warranty certificate.
- Commissioning and operating demonstrations to the user.
- If the fault is caused by fire, flood, meteorological agents, hitting, crushing or usage of inadequate voltage or energy.
- Damage due to the bad treatment, including transport damages that must be claimed in the presence of the personnel of the transport company. For this reason it is advisable to inspect the packages before signing the corresponding delivery notes.
- Damage caused by physical breakage, such as casings, plastics, paints, enamels, crystals, trim and the like.
- Products that are damaged due to misuse, failing to comply with the operating instructions that are included with each product.
- Improper use of accessories in the product.
- Devices that have not been identified with the factory serial number or have been altered or erased or do not match the one stated in the warranty.
- By previous intervention, manipulation and / or repair carried out by an unauthorized Technical Service.